

Mighty Mini C €



Manual



Montageanleitung



Handleiding



Manuel



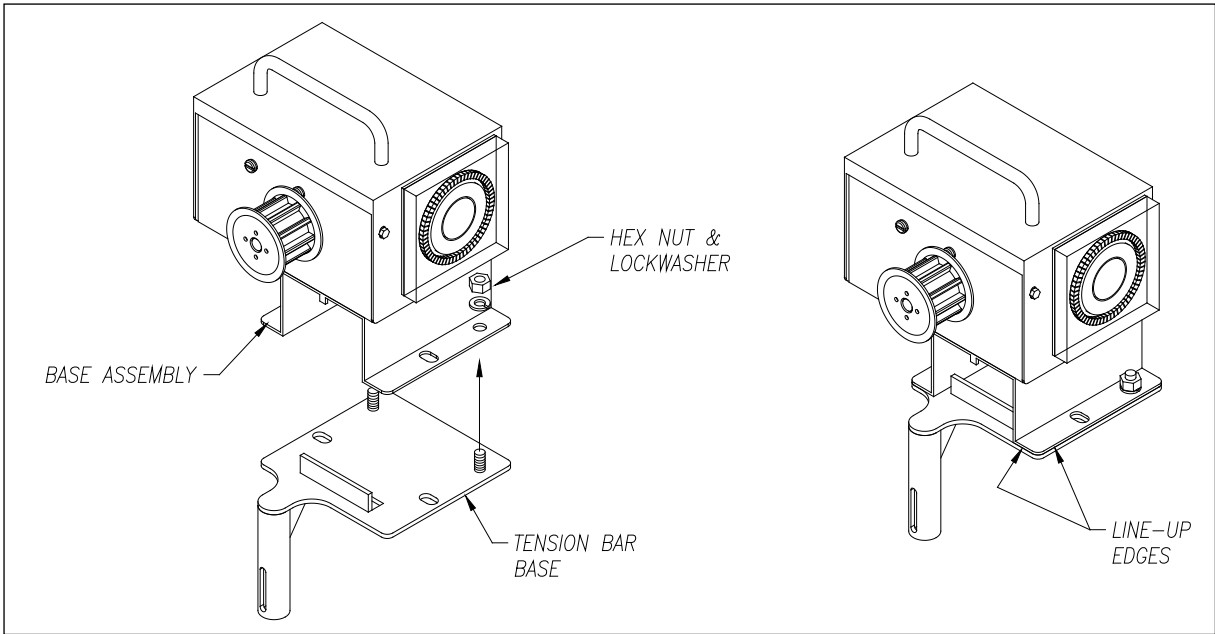
Manual



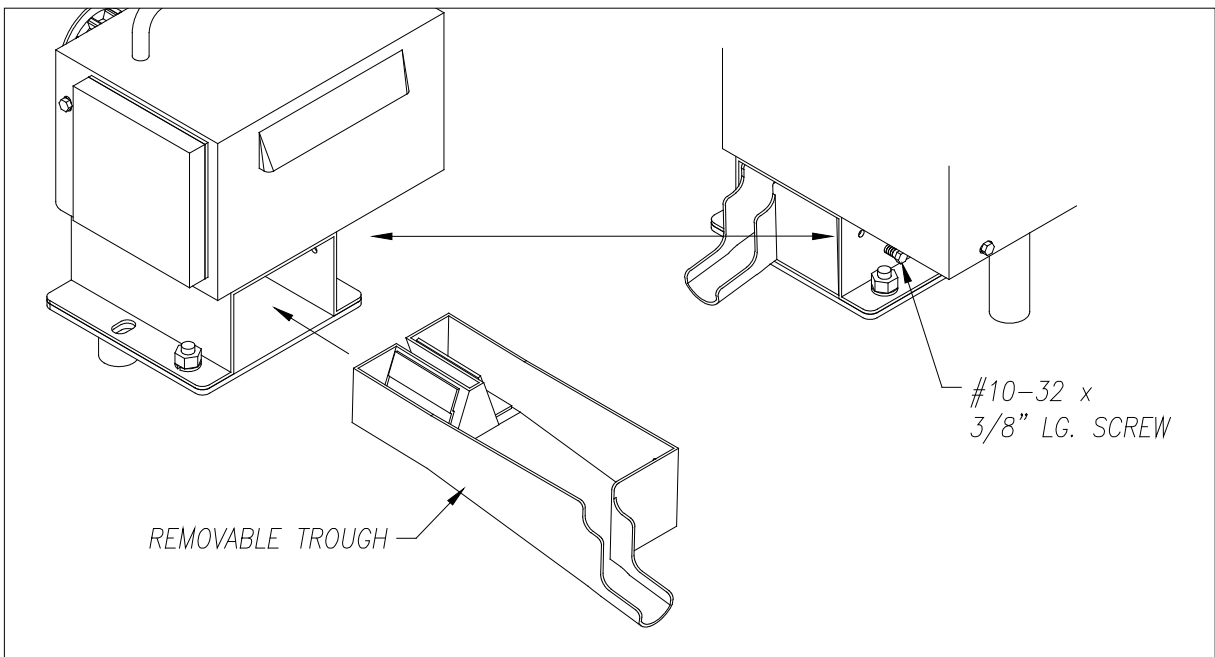
Manuale



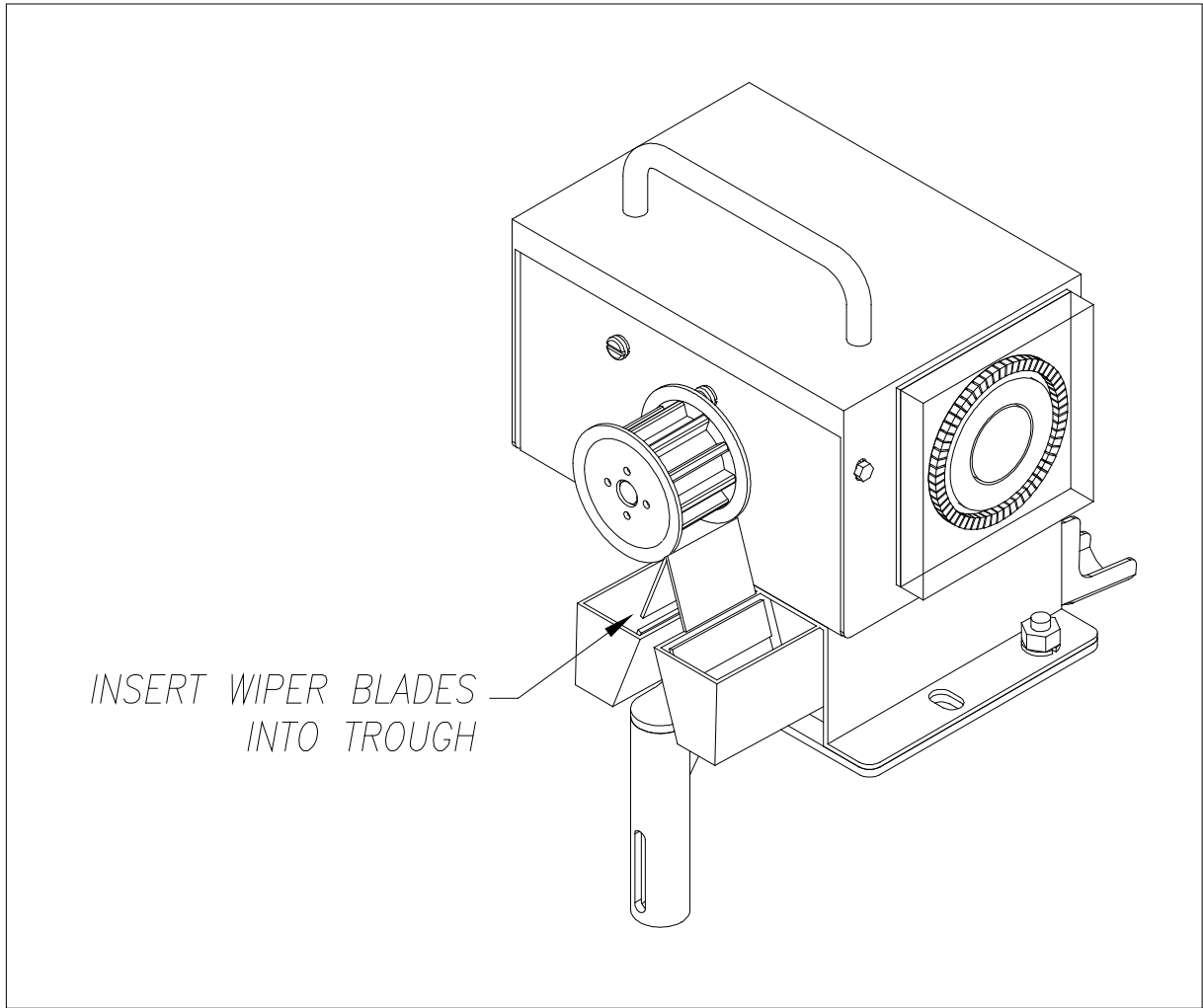
1



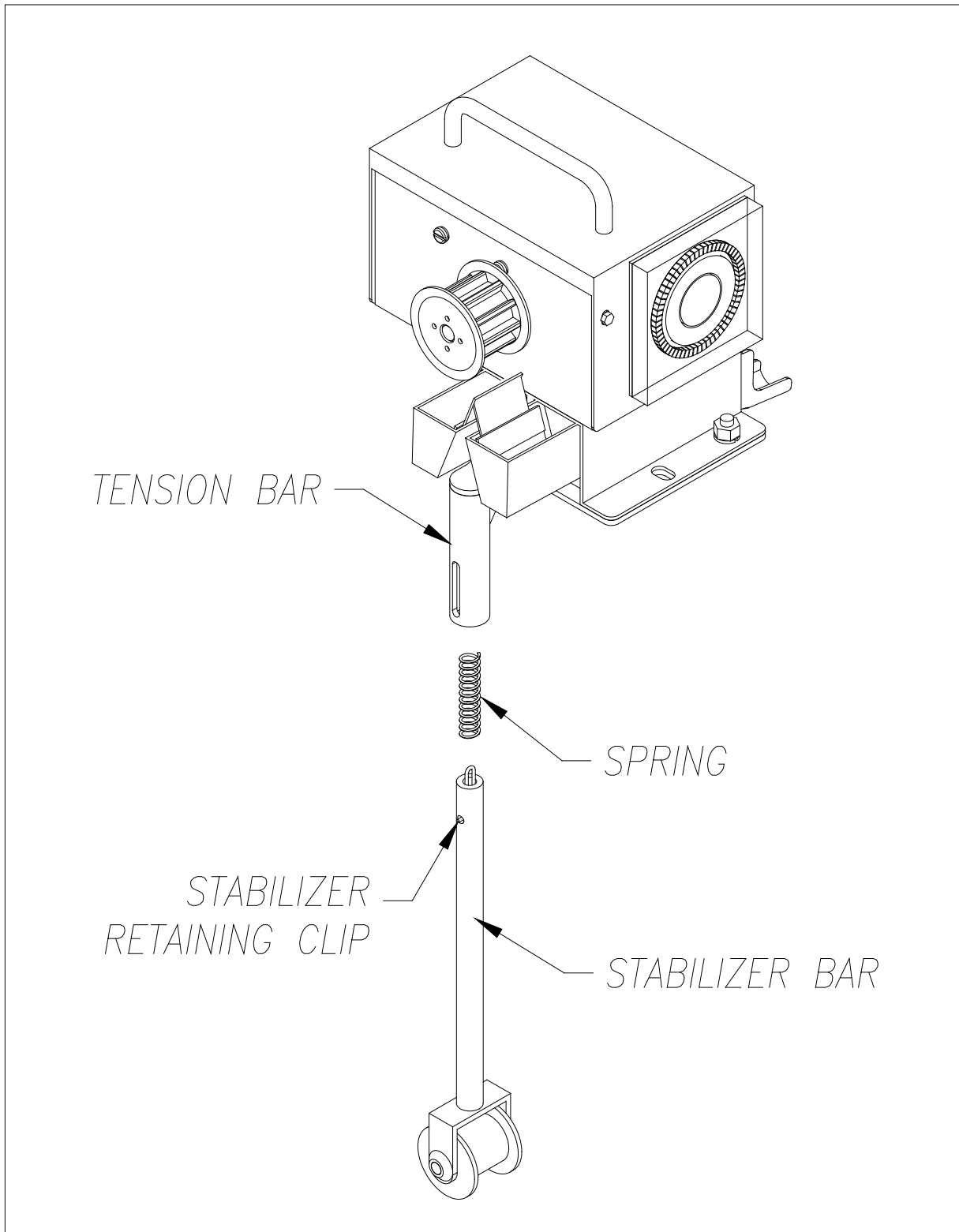
2



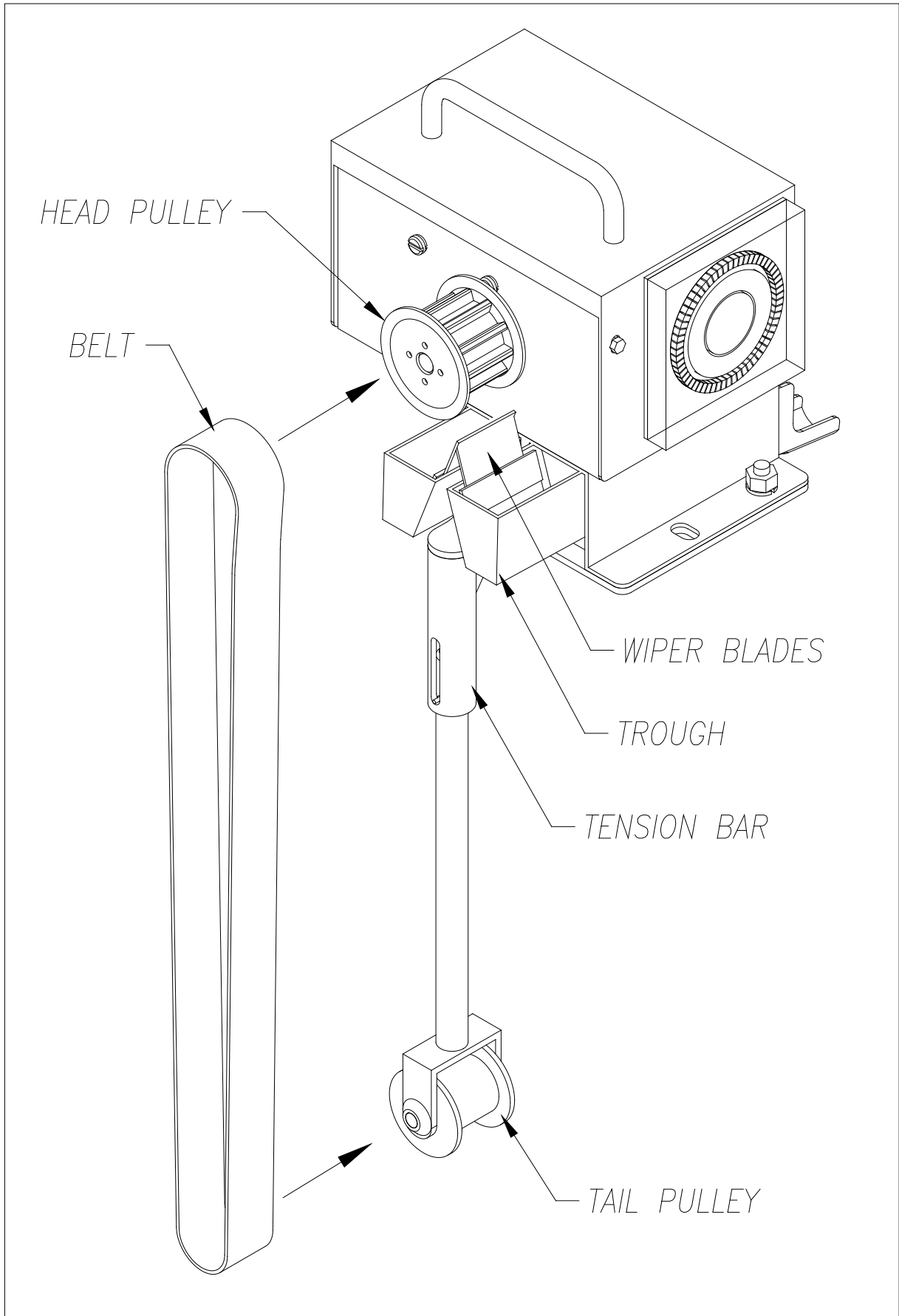
3



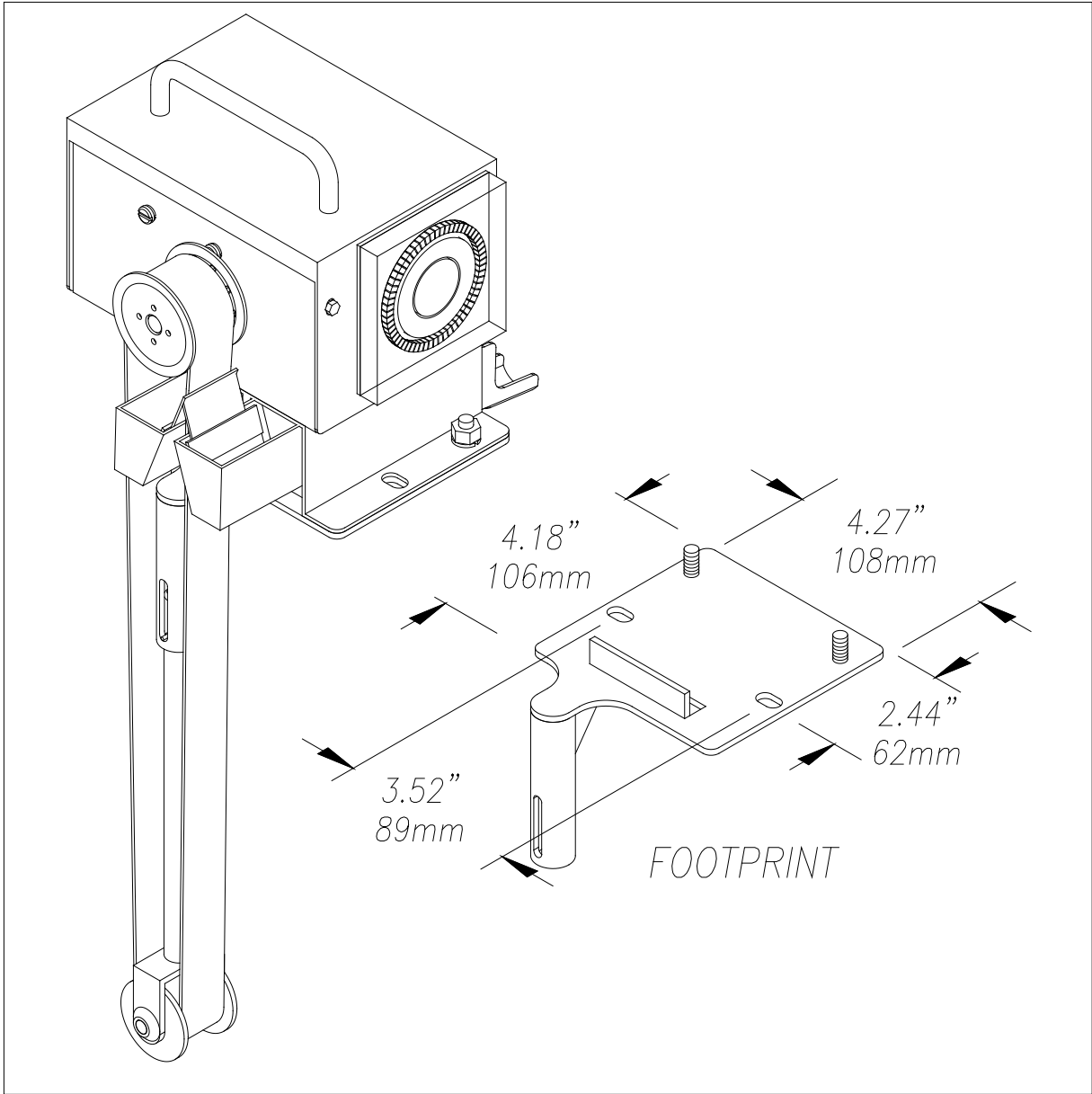
4



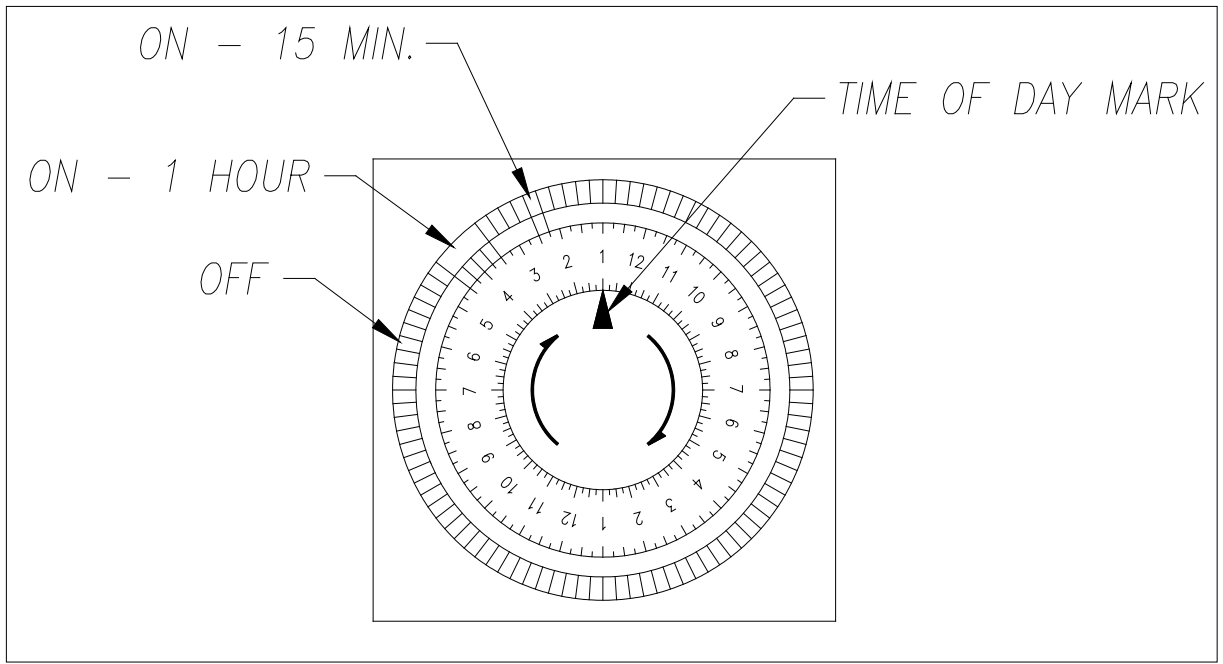
5

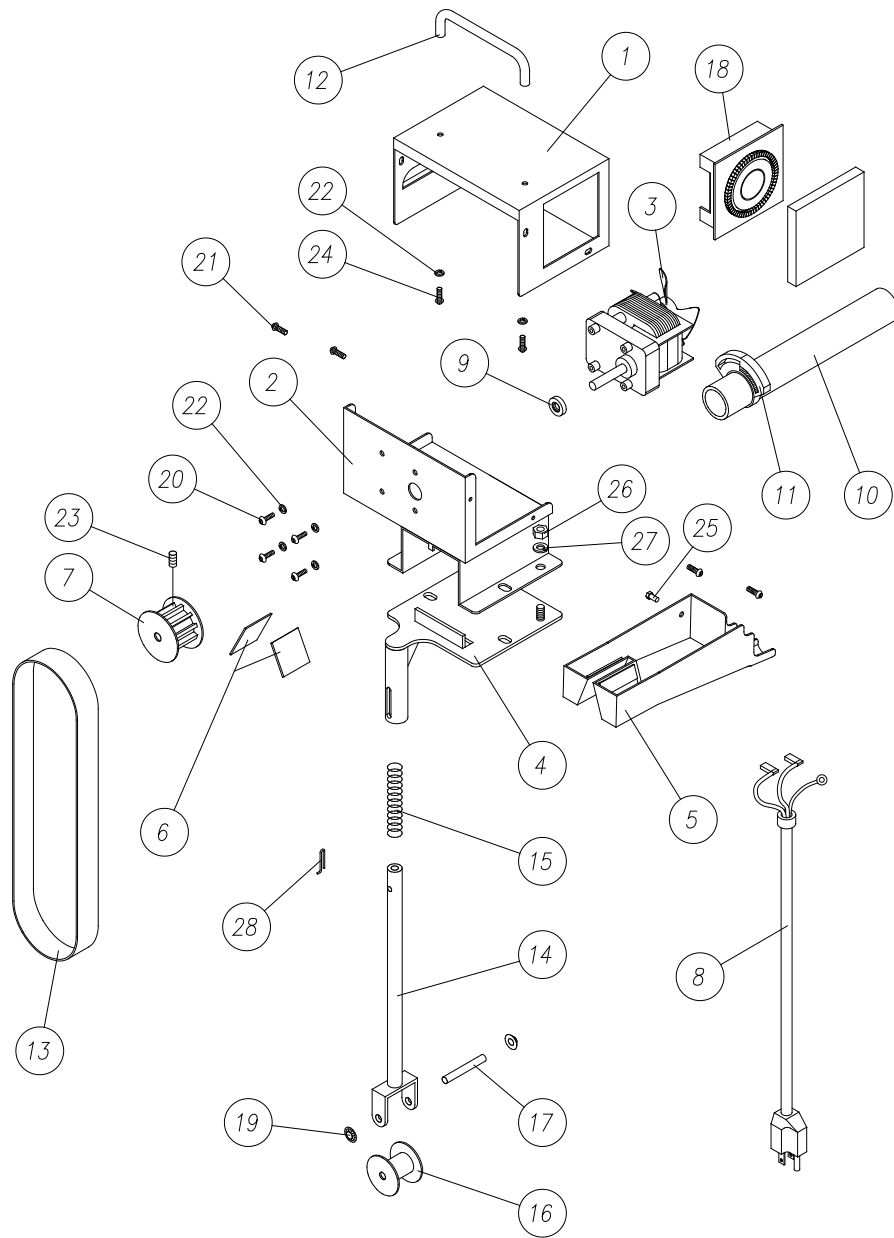


6



7





Item	Qty	Part Name	Part Number	Item	Qty	Part Name	Part Number
1	1	Base Cover	Call Factory	15	1	S.S. Spring	PMM100SPRING
2	1	Base	UMM100-ISL	16	1	1" Tail Pulley 2" Tail Pulley	VMM1PULLEY VMM2PULLEY
3	1	Fan Cooled Motor 110V Fan Cooled Motor 220V	MGRX4973 MGRX4972	17	1	1/4" Dia. x 1-7/8" Lg. S.S. Pin 2-7/8" Lg. for 2" unit	N/A
4	1	Tension Bar Base 1" for 6" unit 1" for 12, 18 & 24" units 2" for 6" unit 2" for 12,18 & 24" units	UMM100-BP16-ISL UMM100-BP1-ISL UMM100-BP26-ISL UMM100-BP2-ISL	18	1	110V Timer 220V Timer	PTIMER115V PTIMER240V
5	1	1" Trough 2" Trough	UMM100-TR1-ISL UMM100-TR2-ISL	19	2	1/4" Flat Round S.S. Push Nut	N/A
6	1	1" Wiper Blade Set 2" Wiper Blade Set	PMMWB00 PMM2WB00	20	4	#8-32 x 1/4" Lg. S.S. Screw	N/A
7	1	1" Head Pulley 2" Head Pulley	PMM100HPSS PMM200HPSS	21	4	#8-32 x 3/8" Hex S.S. Screw	N/A
8	1	8' 3 Prong cord	V2W686-6WR	22	6	#8 S.S. Lock Washer	N/A
9	1	Shaft Seal	VSHAFTSEALMM	23	1	1/4-20 x 1/2" Lg. SS Screw	N/A
10	1	Clear Discharge Hose	XVPTUBE.75	24	2	#8-32 x 1/2" S.S. Pan Head Screw	N/A
11	1	Hose Clamp	VMC5246K38	25	1	#10-32 x 1/2" Lg. Screw	N/A
12	1	S.S. Handle	V1568A11S	26	2	1/4-20 Hex Nut	N/A
13	1	Belt Specify: 1" or 2" wide (S) - Steel Belt (E) - Elastomer (P) - Poly	BMM()-0006 BMM()-0012 BMM()-0018 BMM()-0024	27	2	1/4" Lockwasher	N/A
14	1	Stabilizer Bar	UMM100STAB-QQS (1") UMM200STAB-QQS (2") (QQ Specify Length)	28	1	Stabilizer Retainer Clip	N/A

